

The George Washington University CAMPUS PLAN



West End Citizens Association Meeting
December 6, 2025

Agenda

- The Planning Process
- Draft Guiding Principles
- Opportunities for Community Engagement

PLANNING PROCESS

What is a Campus Plan?

Zoning Requirement for Colleges and Universities in Washington DC

- DC colleges and universities located in residential zones are subject to "Campus Plan" provisions of the DC Zoning Regulations (DCMR Subtitle X Section 101.1)
- Campus Plans are required to be submitted periodically for review and approval by the DC Zoning Commission to address University, community, and District priorities
 - Term of a Campus Plan generally 10 to 20 years; GW Foggy Bottom 2007 and GU 2017 Plans have 20-year terms; Catholic 2012 Plan has 15-year term; AU 2021 and GW Mount Vernon Campus 2022 Plans have 10-year terms.
- Zoning Commission review of a Campus Plan is aimed at ensuring that impacts on surrounding residential neighborhoods are effectively managed
- Once a Campus Plan is approved, each development project or change in use is subject to additional public hearing review and approval by the Zoning Commission (known as "Further Processing")
- Amendments and modifications to an approved Campus Plan also require public hearing review and approval by the Zoning Commission
- ANC2A provided "great weight" as part of Zoning Commission's review of the Campus Plan, Further Processing, and any amendments or modifications

What Does a Campus Plan Address?

Evaluates long-term plans for a campus in the context of its surrounding neighborhoods

- Pursuant to the DC Zoning Regulations, Campus Plans address a wide range of uses and activities on campus, including the following key considerations:
 - **Student Enrollment and Campus Populations**
 - Projected number of students, faculty and staff at the Foggy Bottom Campus
 - **Development and Campus Character**
 - Location, height, square footage, and use of all potential new development, and proposed streetscape, open space, landscape, signage and identify elements
 - **Student Housing and On-Campus Life**
 - Proposed locations for student housing and projected number of beds, and facilities to support a vibrant living and learning campus environment
 - **Neighborhood Quality of Life Issues**
 - Engagement with neighborhood residents and initiatives with student who reside off-campus to equip them to be responsible members of the community and promote positive, mutually-beneficial relationships
 - **Transportation and Parking**
 - Transportation Demand Management (TDM) strategies aimed at promoting sustainable transportation options and reducing the use of single-occupancy vehicles and demand for on-campus parking

Relationship to Strategic Framework

An avenue to advance many goals in GW's new Strategic Framework

STRATEGIC FRAMEWORK

Bringing the Strategic Plan's Thematic Focus Areas to Life.

Advancing Impactful Knowledge Production
through Interdisciplinary Excellence



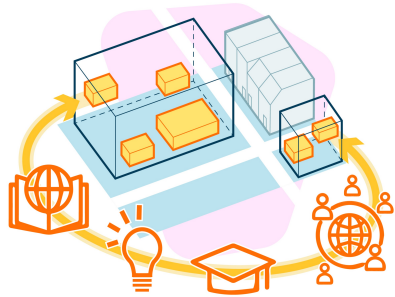
Priority 1:
Generate Scholarship with
Impact

Priority 2:
Prepare Students to Be Strong
and Resilient Leaders

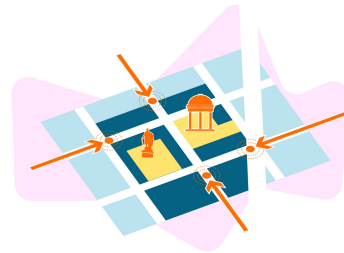
Priority 3:
Strengthen Our Foundation
for Excellence

Draft Guiding Principles

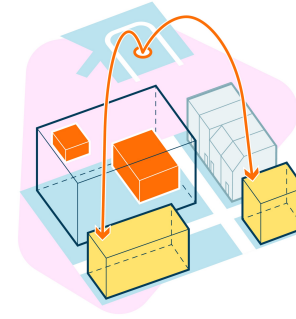
DRAFT 2027 Campus Plan Guiding Principles



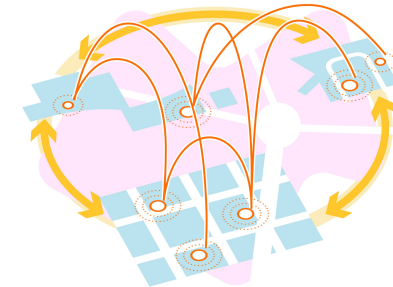
1. Foster Academic Excellence Through Strategic Space Optimization



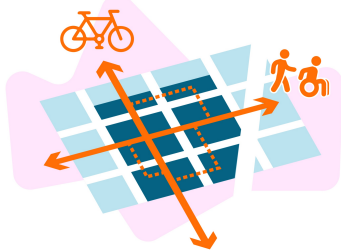
2. Build a Cohesive Campus Identity



3. Enhance the Campus Experience & Quality of Life



4. Leverage Multi-Campus Assets Strategically



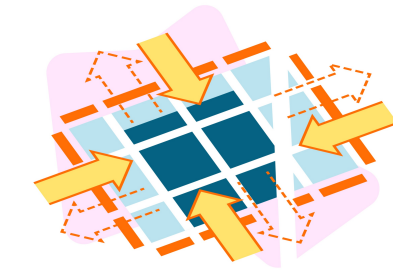
5. Improve Campus Connectivity, Navigation, & Accessibility



6. Prioritize Sustainability and Resilience



7. Reflect Global Significance Throughout Campus

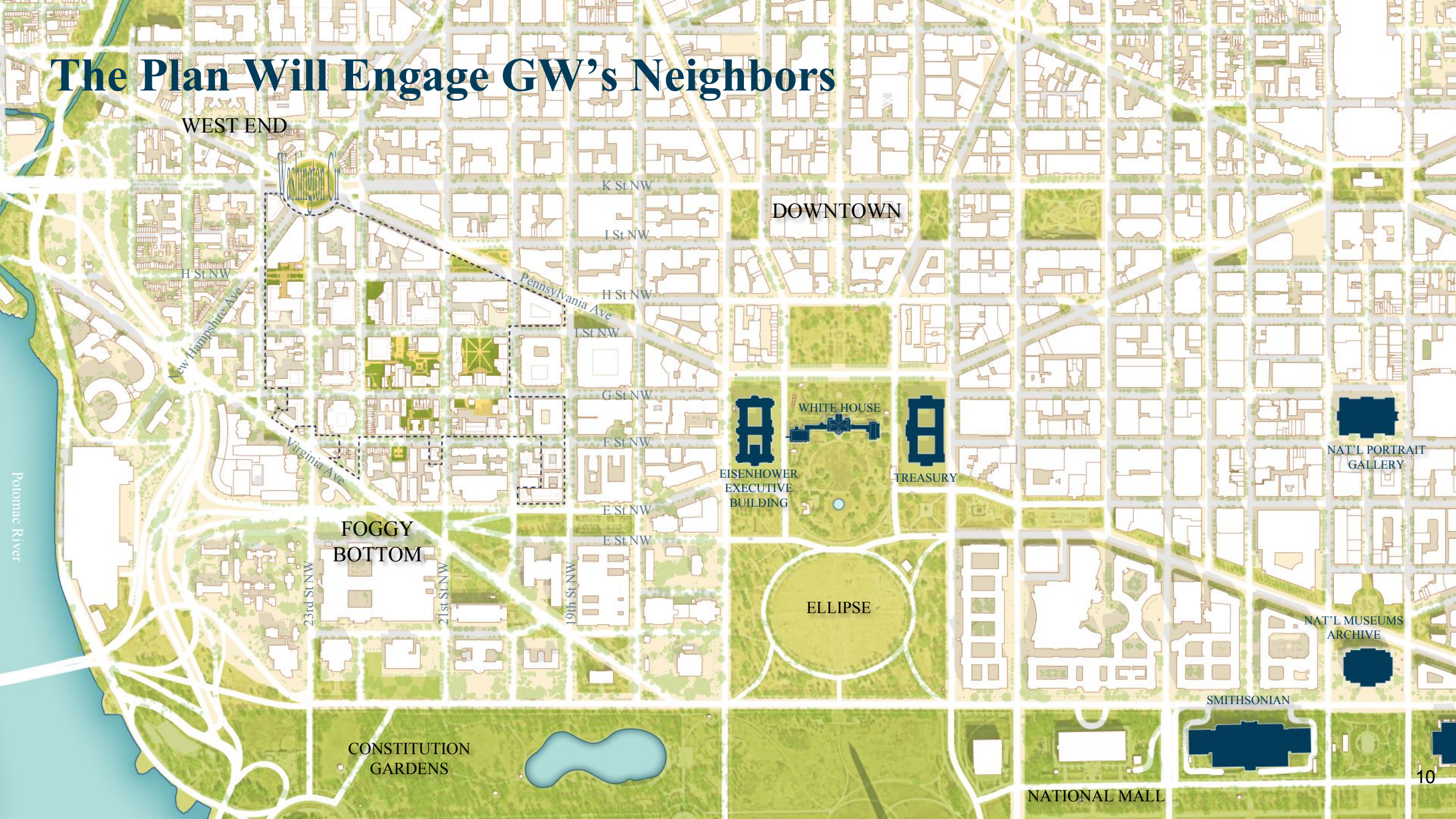


8. Engage and Partner with the City and Surrounding Neighborhoods

The Plan Will Explore GW's Relationships within the City



The Plan Will Engage GW's Neighbors



WEST END

DOWNTOWN

FOGGY
BOTTOM

CONSTITUTION
GARDENS

ELLIPSE

WHITE HOUSE

EISENHOWER
EXECUTIVE
BUILDING

TREASURY

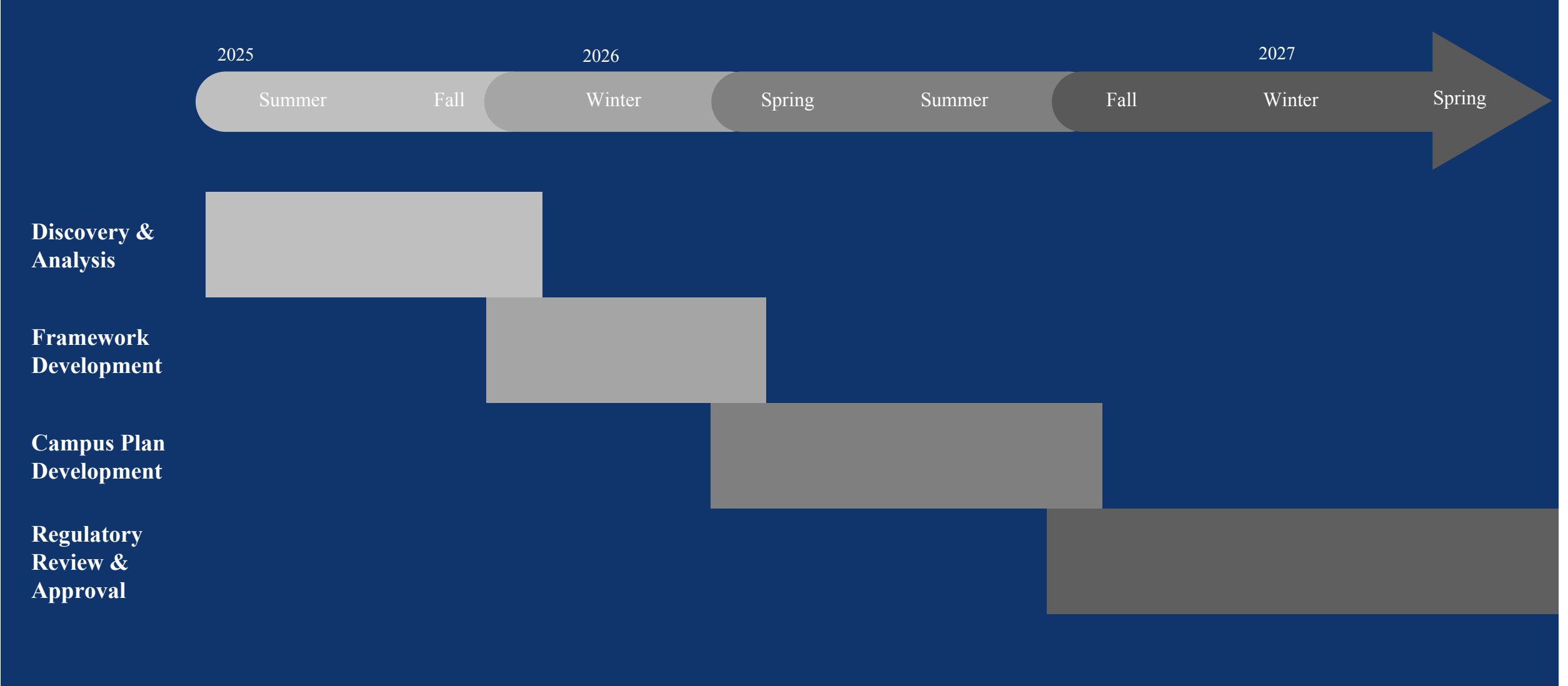
NAT'L PORTRAIT
GALLERY

NAT'L MUSEUMS
ARCHIVE

SMITHSONIAN

NATIONAL MALL

Process & Timeline



Opportunities for Community Engagement

Opportunities for Community Engagement

- Upcoming Events
 - Tabling at West End Library: December 8, 2025 from 12:00 – 2:00 pm
 - Campus Plan Advisory Committee: January 20, 2026 at 6:30 pm (hybrid)
- Community Office Hours
 - January 12, 2026 from 7:00 – 8:00 pm (virtual)
 - February 9, 2026 from 7:00 – 8:00 pm (virtual)
 - March 9, 2026 from 7:00 – 8:00 pm (virtual)
- Community Survey
- Input Portal
 - Available on the Campus Plan website at campusplan.gwu.edu

Community Survey

- **We Need Your Input!**

- Our community-wide survey was promoted via postcard and electronically to over 9,000 residents in Foggy Bottom and West End ZIP codes.
- Topics include campus character, neighborhood life, transportation, sustainability, and community partnerships.
- 36 responses received in early returns, and more are expected as mail delivery and promotion continue.
- Analysis is ongoing. We've got an early snapshot for you today.

- **How to Participate**

- Take the survey at bit.ly/3K7qqjv or by scanning the QR code.
- Share your thoughts at community meetings, office hours, and through the online input portal.



Community Survey

- **Community survey responses reflect:**
 - Strong appreciation for campus green spaces, Metro access, cultural assets, and partnerships that bring residents onto campus.
 - Constructive input on transportation safety, program awareness, noise and quality of life improvements, and opportunities for enhanced community engagement.
 - Emerging ideas on sustainability, student–resident connections, and shared programs that benefit both the neighborhood and GW.
- This is an early snapshot. Feedback is still being collected. Please take the survey and share with your neighbors.
- All responses are being tracked and will be incorporated into the planning process through GW's Issues Exhibit.



Community Survey

- 1. Campus Character and Land Use:** What elements of the Foggy Bottom campus (for example, community serving retail, publicly accessible green spaces) do you feel most positively contribute to the surrounding neighborhood?
- 2. Student Housing and Neighborhood Quality of Life:** As a member of the community, how frequently do you engage with students in the neighborhood and what is the nature of those interactions?
- 3. Transportation and Mobility:** What modes of transportation do you regularly use to travel to, from, and around the Foggy Bottom/West End neighborhood? How accessible and convenient are these transportation options?
- 4. Sustainability and Environmental Stewardship:** GW is a leader in campus sustainability and environmental stewardship. How do you think GW's sustainability and environmental efforts positively impact the neighborhood? Are there programs or initiatives that you believe could better align with community priorities?
- 5. Community Partnerships and Shared Benefits:** Do you participate in any current programs or partnerships between GW and the community (for example, The GW Audit Program, Friends of GW GWorld Card Program, Community Memberships at the Lerner Health and Wellness Center)? Do you have ideas for additional ways GW could strengthen its role as a community and civic partner?
- 6. Additional Engagement Opportunities:** Please let us know if you have any thoughts or ideas about opportunities for expanded engagement and conversation – regarding the Campus Plan or other GW initiatives – with members of the Foggy Bottom/West End community.

Next Steps

Next Steps

- Visit the Campus Plan website at campusplan.gwu.edu
- Take the Community Survey
- Provide feedback on our Community Input Portal
- Connect with us at community office hours, neighborhood meetings, and tabling events
- Contact us at any time at kdays@gwu.edu